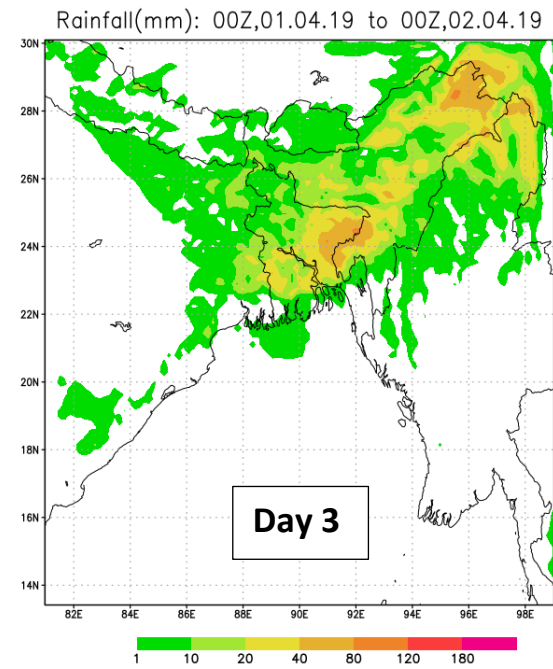
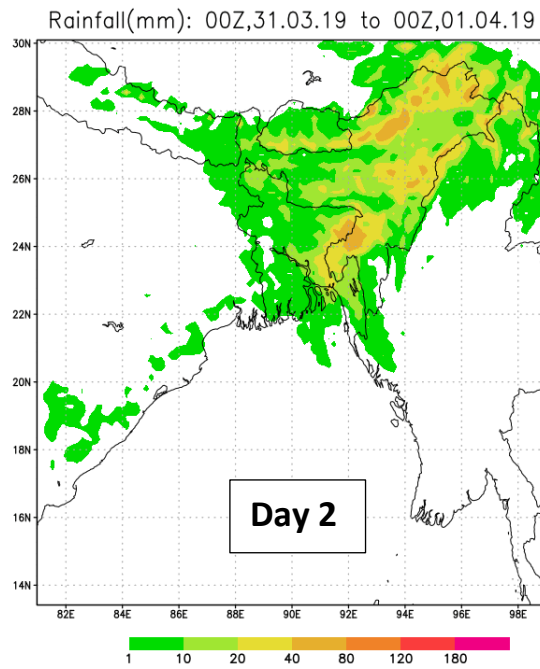
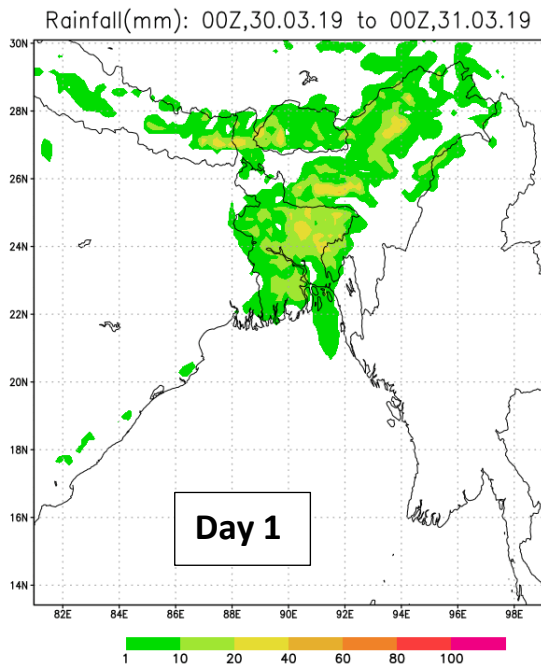


FLOOD INFORMATION CENTRE  
FLOOD FORECASTING & WARNING CENTRE  
BANGLADESH WATER DEVELOPMENT BOARD WAPDA BUILDING, 8TH FLOOR, DHAKA.  
E-mail: ffwc05@yahoo.com, Site: <http://www.ffwc.gov.bd> Tel: 9553118, 9550755

**FLASH FLOOD OUTLOOK FOR THE NORTH-EAST REGION AS ON March 30, 2019**

According to the Weather Forecast provided by Bangladesh Meteorological Department (BMD) and Indian Meteorological Department (IMD), India; there is a chance of light to moderate rainfall for the next three days at upstream hills of Tripura and Meghalaya Basins of India and over Sylhet, Sunamganj, Habiganj and Moulvibazar districts of Bangladesh. The Forecasts from BMD, IMD and NOAA (CPC) are shown below;

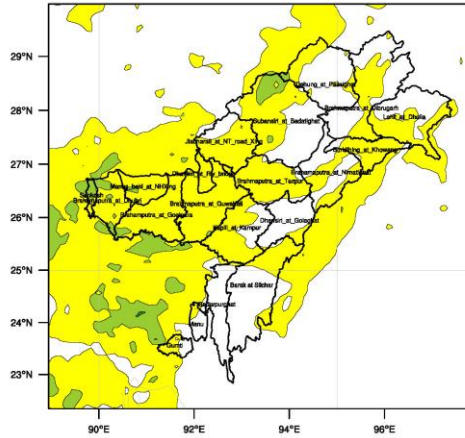


Forecasted Rainfall from Bangladesh Meteorological Department (BMD)

FLOOD MET OFFICE, GUWAHATI

Init: 2019-03-29\_12:00:00  
Valid: 2019-03-31\_03:00:00

IMD WRF Rainfall (mm) Forecast (24hr)



Sub basin wise Average Rainfall Estimation

Badarpurghat = 0 mm	Dhansiri_at_Golaghat = 1 mm
Barak_at_Silchar = 1 mm	Dhansiri_at_Rly_bridge = 4 mm
Brahmaputra_at_Dhubri = 9 mm	Gumti = 2 mm
Brahmaputra_at_Nimatighat = 1 mm	Jiabharali_at_NT_road_Xing = 3 mm
Brahmaputra_at_Goalpara = 7 mm	Kapili_at_Kampur = 2 mm
Brahmaputra_at_Dibrugarh = 1 mm	Lohit_at_Dholla = 1 mm
Brahmaputra_at_Guwahati = 5 mm	Manas_beki_at_NHXing = 6 mm
Brahmaputra_at_Tezpur = 3 mm	Manu = 1 mm
Buridhing_at_Khowang = 2 mm	Sankosh = 11 mm
Dehung_at_Passighat = 1 mm	Subansiri_at_Badatighat = 4 mm

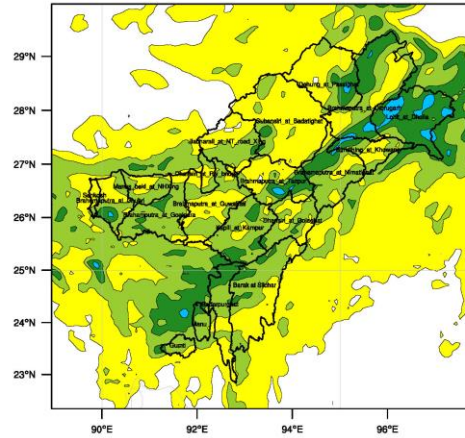
OUTPUT FROM WRF V3.6.1 MODEL  
WE = 1001 ; SN = 945 ; Levels = 45 ; Dis = 9km ; Phys Opt = 16 ; PBL Opt = 2 ; Cu Opt = 5

Day 1

FLOOD MET OFFICE, GUWAHATI

Init: 2019-03-29\_12:00:00  
Valid: 2019-04-01\_03:00:00

IMD WRF Rainfall (mm) Forecast (48hr)



Sub basin wise Average Rainfall Estimation

Badarpurghat = 15 mm	Dhansiri_at_Golaghat = 13 mm
Barak_at_Silchar = 12 mm	Dhansiri_at_Rly_bridge = 10 mm
Brahmaputra_at_Dhubri = 14 mm	Gumti = 14 mm
Brahmaputra_at_Nimatighat = 16 mm	Jiabharali_at_NT_road_Xing = 9 mm
Brahmaputra_at_Goalpara = 16 mm	Kapili_at_Kampur = 16 mm
Brahmaputra_at_Dibrugarh = 18 mm	Lohit_at_Dholla = 32 mm
Brahmaputra_at_Guwahati = 10 mm	Manas_beki_at_NHXing = 12 mm
Brahmaputra_at_Tezpur = 14 mm	Manu = 17 mm
Buridhing_at_Khowang = 16 mm	Sankosh = 9 mm
Dehung_at_Passighat = 12 mm	Subansiri_at_Badatighat = 7 mm

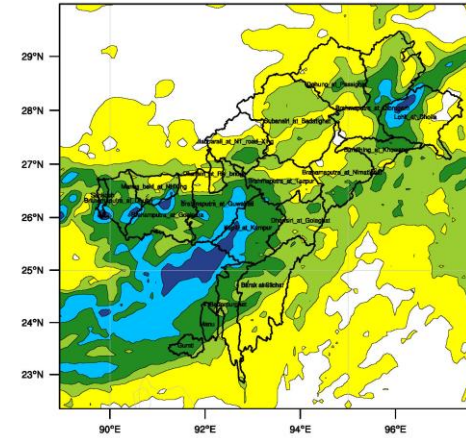
OUTPUT FROM WRF V3.6.1 MODEL  
WE = 1001 ; SN = 945 ; Levels = 45 ; Dis = 9km ; Phys Opt = 16 ; PBL Opt = 2 ; Cu Opt = 5

Day 2

FLOOD MET OFFICE, GUWAHATI

Init: 2019-03-29\_12:00:00  
Valid: 2019-04-02\_03:00:00

IMD WRF Rainfall (mm) Forecast (72hr)



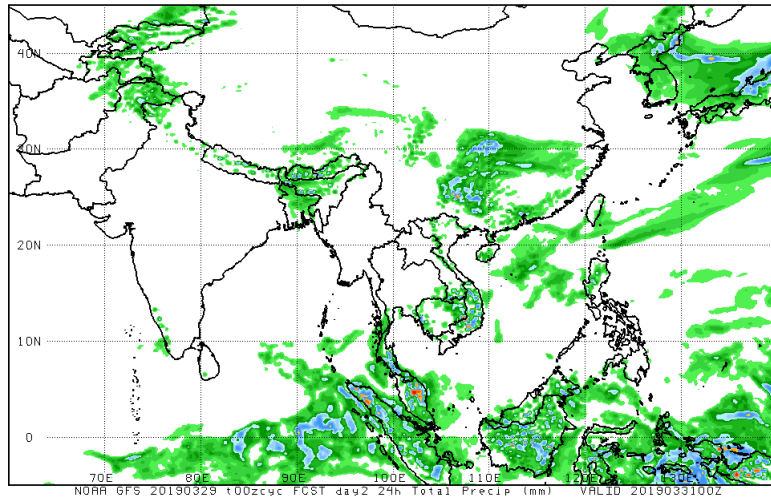
Sub basin wise Average Rainfall Estimation

Badarpurghat = 20 mm	Dhansiri_at_Golaghat = 16 mm
Barak_at_Silchar = 14 mm	Dhansiri_at_Rly_bridge = 9 mm
Brahmaputra_at_Dhubri = 34 mm	Gumti = 28 mm
Brahmaputra_at_Nimatighat = 12 mm	Jiabharali_at_NT_road_Xing = 9 mm
Brahmaputra_at_Goalpara = 28 mm	Kapili_at_Kampur = 40 mm
Brahmaputra_at_Dibrugarh = 17 mm	Lohit_at_Dholla = 24 mm
Brahmaputra_at_Guwahati = 30 mm	Manas_beki_at_NHXing = 18 mm
Brahmaputra_at_Tezpur = 14 mm	Manu = 24 mm
Buridhing_at_Khowang = 16 mm	Sankosh = 36 mm
Dehung_at_Passighat = 9 mm	Subansiri_at_Badatighat = 10 mm

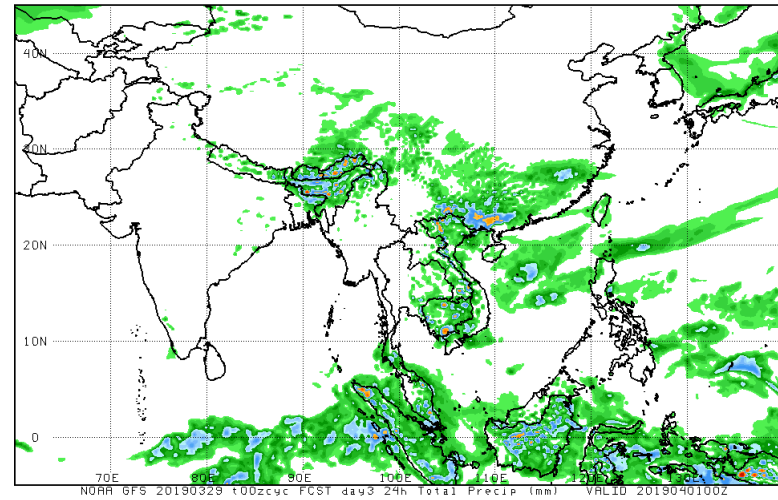
OUTPUT FROM WRF V3.6.1 MODEL  
WE = 1001 ; SN = 945 ; Levels = 45 ; Dis = 9km ; Phys Opt = 16 ; PBL Opt = 2 ; Cu Opt = 5

Day 3

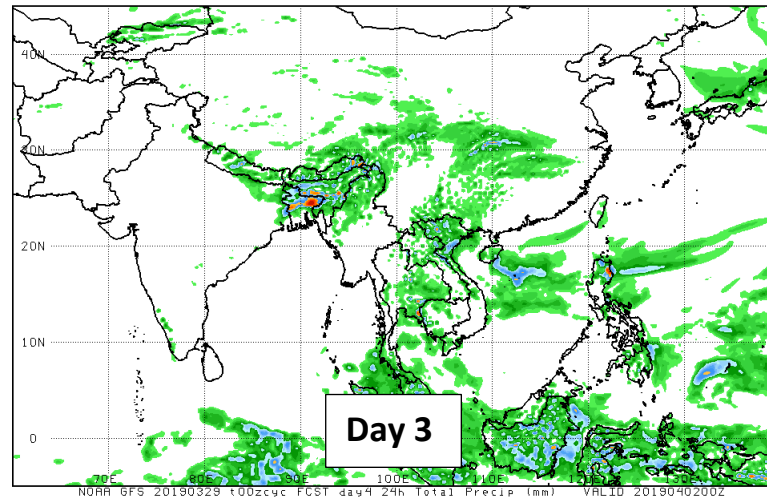
Forecasted Rainfall from Indian Meteorological Department (BMD)



Day 1



Day 2



Day 3

Forecasted Rainfall from NOAA CPC, USA